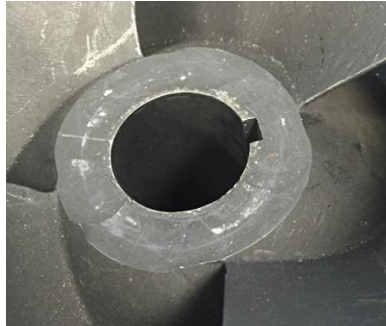


Machining Instructions for the HOLE SHOT Inducer

There are two basic ways to machine the cone of the impeller to install the Hole Shot Inducer.

1. Mill .600" off of the center cone of the impeller and install as the picture below.



2. Take the .600" off of the cone of the impeller by boring a 1.755" hole to a .600" depth from the original cone front. As the picture below.



Either way works well and we haven't been able to measure any difference in performance from one way to the other. The boring method just makes a nicer looking flow pattern for the water to enter the impeller. As always, if you have questions, Call; 417-858-8616

